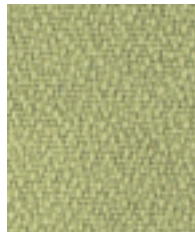


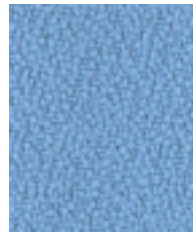
# Phoenix



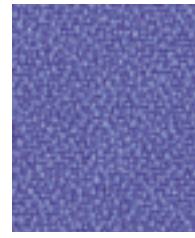
Sandstorm YP107



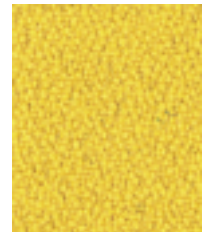
Apple YP108



Parasol YP109



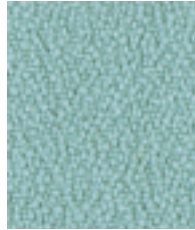
Bluebell YP097



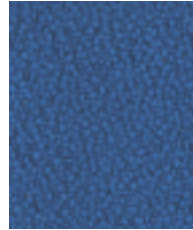
Solano YP110



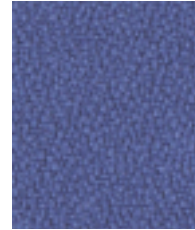
Nougat YP111



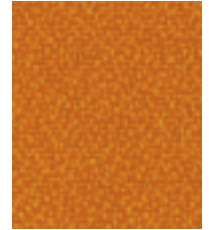
Campeche YP112



Scuba YP082



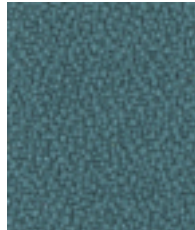
Bluefield YP021



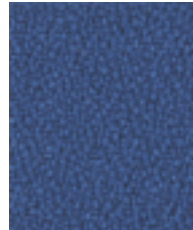
Olympic YP113



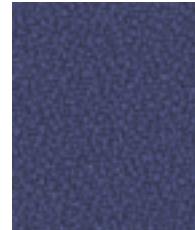
Blizzard YP081



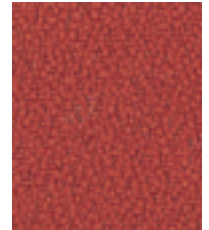
Windjammer YP047



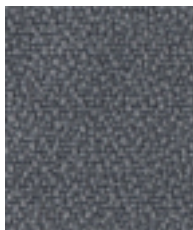
Curacao YP005



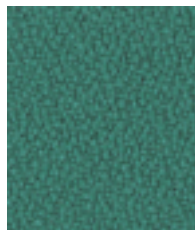
Cayman YP024



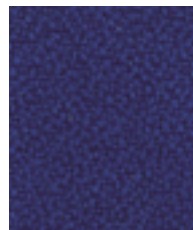
Lobster YP076



Paseo YP019



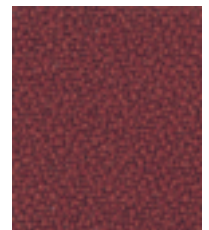
Rainforest YP114



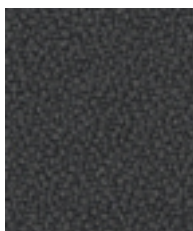
Ocean YP100



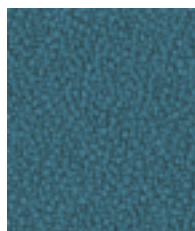
Tarot YP084



Jamaica YP027



Sombrero YP046



Montserrat YP011



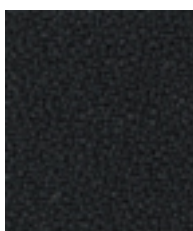
Costa YP026



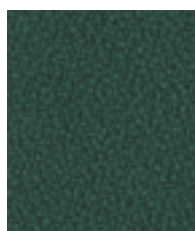
Guyana YP051



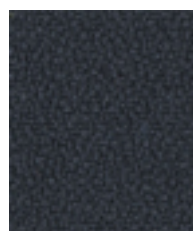
Calypso YP106



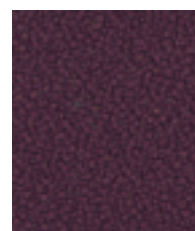
Havana YP009



Taboo YP045



Arawak YP016



Tobago YP030



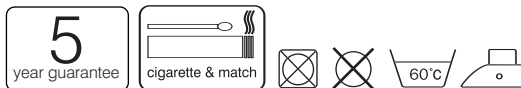
Belize YP105

[www.camirafabrics.com/samples](http://www.camirafabrics.com/samples)

To order samples, visit our on-line sample service.



# Phoenix



## UK

Composition	100% Polyester. Non metallic dyestuffs
Weight	285g/m <sup>2</sup> ±5% (400g/lin.m. ±5%)
Width	140cm ±2% Usable
*Abrasion Resistance	100,000 Martindale cycles with a 5 year guarantee of wearability (full details available)
Flammability	BS EN 1021 - 1:2006 (cigarette), BS EN 1021 - 2:2006 (match), BS 7176 :2007 Low Hazard, <i>Note: Flammability performance is dependent on foam used.</i>
*Light Fastness	6 (ISO 105 - B02:1999)
*Fastness to Rubbing	Wet: 4 Dry: 4 (ISO 105 - X12:2002)
Maintenance	Washable to 60°C. Vacuum regularly. Wipe clean with a damp cloth or shampoo using proprietary upholstery shampoo.
Colour Matching	Batch to batch variations in shade may occur within commercial tolerances.

\*Tested in accordance with BS 2543:1995/2004. Further information available on request. Please note that ultimate seam performance is dependent on seam construction, and needle and thread type. We recommend that appropriate sewing advice be taken.  
**Note:** We reserve the right to alter technical specifications without notice. The Unregistered Design Rights and the Copyright in all designs are the exclusive property of Camira Fabrics Limited.

## F

Composition	100% Polyester. Teintures non métalliques
Poids	285g/m <sup>2</sup> ±5% (400g/l.m. ±5%)
Largeur	140cm ±2% utilisable
*Résistance à l'abrasion	100,000 Martindale tours avec une garantie de durabilité de 5 ans (enseignements complémentaires disponibles)
Flammabilité	BS EN 1021 - 1:2006 (cigarette), BS EN 1021 - 2:2006 (allumette) BS 7176 :2007 Low Hazard <i>Notez: Réaction au feu dépend de la mousse utilisée.</i>
*Solidité à la lumière	6 (ISO 105 - B02:1999)
*Solidité au Frottement	Mouillé: 4 Sec: 4 (ISO 105 - X12:2002)
Nettoyage	Lavable jusqu'à 60°C. Aspirer régulièrement. Essuyer avec une étoffe humide ou nettoyer à l'aide d'un produit approprié pour tissus d'ameublement.
Standardisation des coloris	Variations de coloris d'un bain à un autre peuvent se manifester.

\*Testé selon la norme BS 2543:1995/2004. De plus amples informations sont disponibles sur demande. Veuillez noter que le glissement de la couture sous tension dépend de la structure de la couture, de l'aiguille et du fil. Nous recommandons de prendre conseil au près d'un professionnel.  
**Neußer:** nous réservons le droit de modifier les spécifications techniques sans préavis. Les droits non-déposés sur les designs ainsi que les droits de copie sont la propriété exclusive de Camira Fabrics Limited.

## I

Composizione	100% Poliestere. Tinture prive di metalli pesanti
Peso	285g/m <sup>2</sup> ±5% (400g/lin.m. ±5%)
Altezza	140cm ±2% Utilizzabile
*Resistenza all'abrasione	100,000 Cicli Martindale con garanzia d'uso di 5 anni (dettagli disponibili a richiesta)
Resistenza al fuoco	BS EN 1021 - 1:2006 (Sigaretta), BS EN 1021 - 2:2006 (Cerino) BS 7176 :2007 Low Hazard <i>Nota: Il grado di resistenza al fuoco dipende dal tipo di schiuma utilizzata</i>
*Solidità alla luce	6 (ISO 105 - B02:1999)
*Resistenza allo sfregamento	Umido: 4 Secco: 4 (ISO 105 - X12:2002)
Manutenzione	Lavabile a 60°C. Regularmente con aspirapolvere. Strofinare leggermente con panno umido o usare detergente neutro per tessuti
Costanza del colore	Sono possibili leggere variazioni.

\*Ha superato il test BS 2543:1995/2004. Ulteriori informazioni disponibili su richiesta. La resistenza della cucitura dipende dal tipo di cucitura e dall'ago e dal filo usati. Si suggerisce di seguire istruzioni di un tecnico.  
**Nota:** Ci riserviamo il diritto di modificare le specifiche tecniche senza preavviso. I diritti su tutti i disegni non ancora registrati e quelli coperti da Copyright sono proprietà esclusiva di Camira Fabrics Limited.

## D

Zusammensetzung	100% Polyester. Nicht schwermetallhaltige Farbstoffe
Gewicht	285g/m <sup>2</sup> ±5% (400g/lfd.M. ±5%)
Breite	140cm ±2% ohne Webkante
*Scheuerfestigkeit	100,000 Martindale Scheuertouren und 5 Jahre Garantie gegen Durchscheuern (Details auf Anfrage)
Feuersicherung	EN 1021 - 1:2006 (Zigarettestest), EN 1021 - 2:2006 (Streichholztest), BS 7176 :2007 Low Hazard <i>Bemerkung: Schwerentflammbarkeit hängt von verwendetem Schaum ab.</i>
*Lichtechtheit	6 (ISO 105 - B02:1999)
*Reibechtheit	Nass: 4 Trocken: 4 (ISO 105 - X12:2002)
Reinigung	Waschbar bis 60°C. Regelmässig staubsaugen. Mit einem feuchten Tuch abwischen, oder mit einem speziellen Polsterschaum behandeln.
Farbabweichungen	Handelsübliche Farbabweichungen vorbehalten

\* Wurde nach BS 2543: 2004 getestet. Weitere Informationen erhalten Sie auf Nachfrage. Eine optimale Nahtausreissfestigkeit hängt von der Nahtfahne, der verwendeten Nadel und des Fadens ab. Wir empfehlen daher Nähversuche durchzuführen.  
**Anmerkung:** Wir behalten uns die Änderungen technischer Spezifikationen vor. Die registrierten und nicht registrierten Urheberrechte an den Dessinierungen sind ausschließliches Eigentum der Camira Fabrics Limited.

## DK

Materiale	100% Polyester. Ikke metalliske farvestoffer
Vægt	285g/m <sup>2</sup> ±5% (400g/lin.m. ±5%)
Bredde	140cm ±2% anvendeligt
*Slidstyrke	100,000 Martindale slidebøvælgelser med 5 års garanti (udførlig beskrivelse af garantien kan rekvireres)
Flammesikring	BS EN 1021 - 1:2006 (cigarettest), BS EN 1021 - 2:2006 (tændstiktest) BS 7176 :2007 Low Hazard <i>Bemærk: Flammesikkerheden er afhængig af anvendt skumtype</i>
*Lysægted	6 (ISO 105 - B02:1999)
*Gnidægted	Våd: 4 Tor: 4 (ISO 105 - X12:2002)
Rengjoring	Vaskbar ved 60°C. Stovsuges regelmæssigt. Alternativt rengoring med en hårdt opvredet klud eller skumrensning ved brug af en anerkendt møbelshampoo.
Farvedifferencer	Farvedifferencer indenfor kommercielle tolerancegrænser kan forekomme fra serie til serie.

\* Testet i henhold til BS2543:1995/2004. Yderligere information kan fås på forespørgsel. Vær opmærksom på, at optimal smuldring er afhængig af som-, nål- og trådtype. Vi anbefaler, at du følger relevante sy-instruktioner.  
**Bemærk:** Vi forbeholder os retten til at ændre tekniske specifikationer uden varsel. De uregistrerede designrettigheder og ophavsretten til alle designs tilhører ubetinget Camira Fabrics Limited.

## ES

Composición	100% Polyester. Tintes no metálicos
Peso	285g/m <sup>2</sup> ±5% (400g/lin.m. ±5%)
Ancho	140cm ±2% utilizable
*Resistencia a la abrasión	100,000 Martindale ciclos con garantía de uso 5 años (más información disponible bajo consulta)
Inflamabilidad	EN 1021 - 1:2006 (cigarillo), EN 1021 - 2:2006 (cerilla), BS 7176 :2007 Low Hazard <i>Condiciones ignífugas dependientes del tipo de foam utilizado</i>
*Solidez a la luz	6 (ISO 105 - B02:1999)
*Solidez al rozamiento	Húmedo: 4 Seco: 4 (ISO 105 - X12:2002)
Maintenance	Lavable hasta 60°C. Limpiar con aspiradora frecuentemente. Bien lavar con un paño húmedo o con un champú apropiado para tapicería.
Colour Matching	Cada lote puede tener pequeñas variaciones en el tono dentro de las tolerancias comercialmente aceptadas.

\*Pruebas realizadas según la norma BS 2543:1995/2004. Más información disponible bajo consulta. El desajuste de costura depende de su construcción así como el tipo de aguja y hilo empleados. Se recomienda que pida consejos apropiados para la costura.  
Se reserva el derecho de modificar las especificaciones técnicas sin previo aviso. Los derechos sobre dibujos no registrados y los derechos de autor sobre todos los dibujos son propiedad exclusiva de Camira Fabrics Limited.

# camira

Camira Fabrics Ltd, Hopton Mills, Mirfield, West Yorkshire, UK, WF14 8HE

Sales: UK (01924) 490491, Int. +44 1924 491666 F +44 (0)1924 495605 / 498930 e-mail: info@camirafabrics.com

UK Sales	T 01924 490491	F 01924 498930
International Sales	T +44 1924 491666	F +44 1924 495605
France/Benelux	T +32 56 227 266	F +32 56 228 647
Germany	T +49 7031 60 84 30	F +49 7031 60 84 33
Scandinavia	T +45 32 55 20 01	F +45 32 52 55 45
Hong Kong	T +852 2314 8728	F +852 2314 4250
Dubai	T +971 4 3967398	F +971 4 3967398

www.camirafabrics.com



ISO 14001:FM 35118